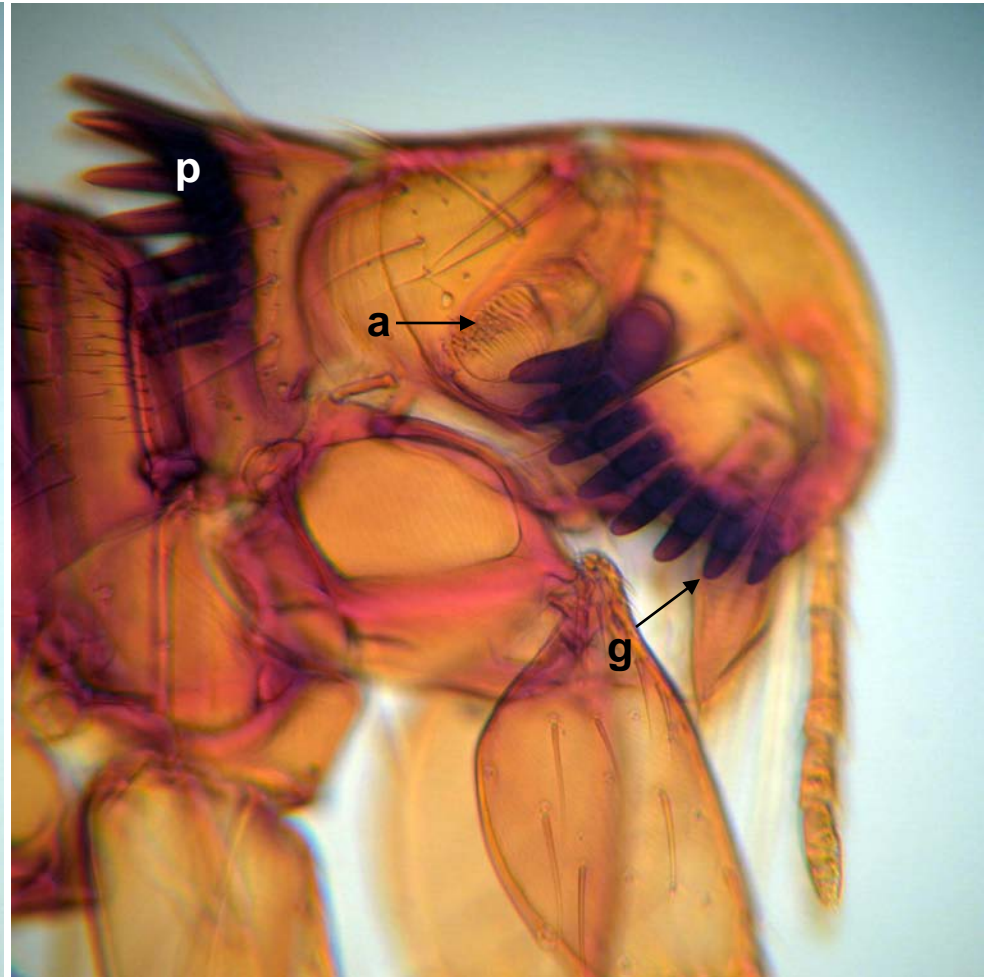
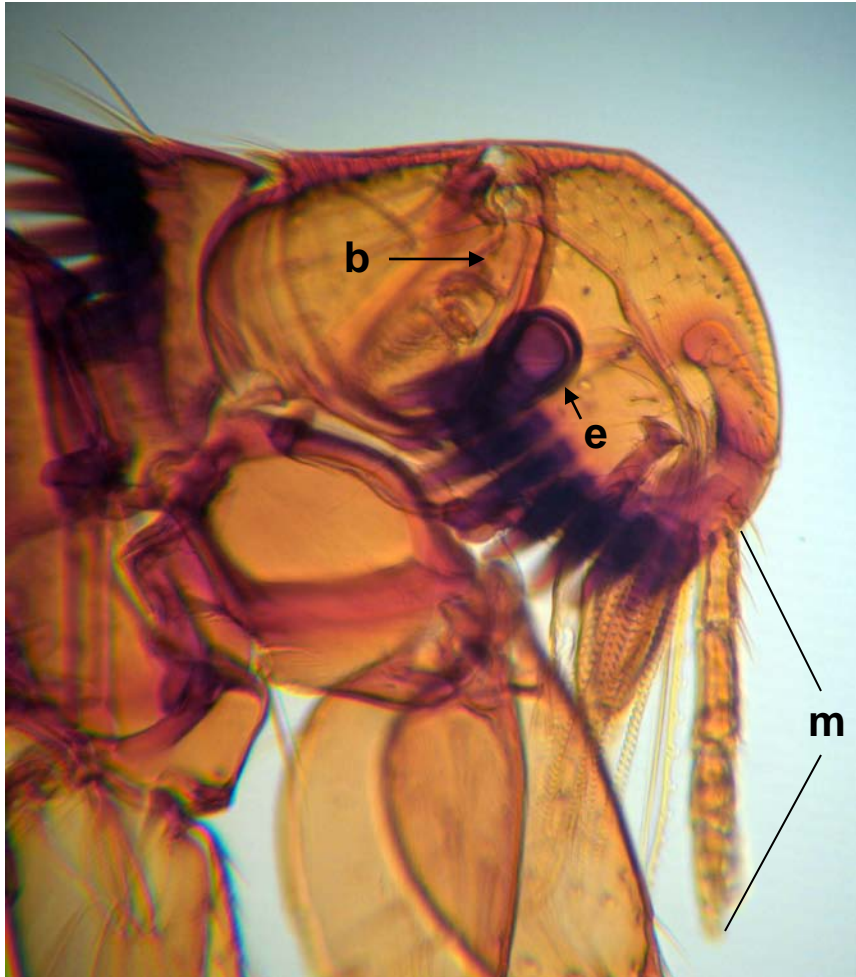


*Cediopsylla simplex*, female.

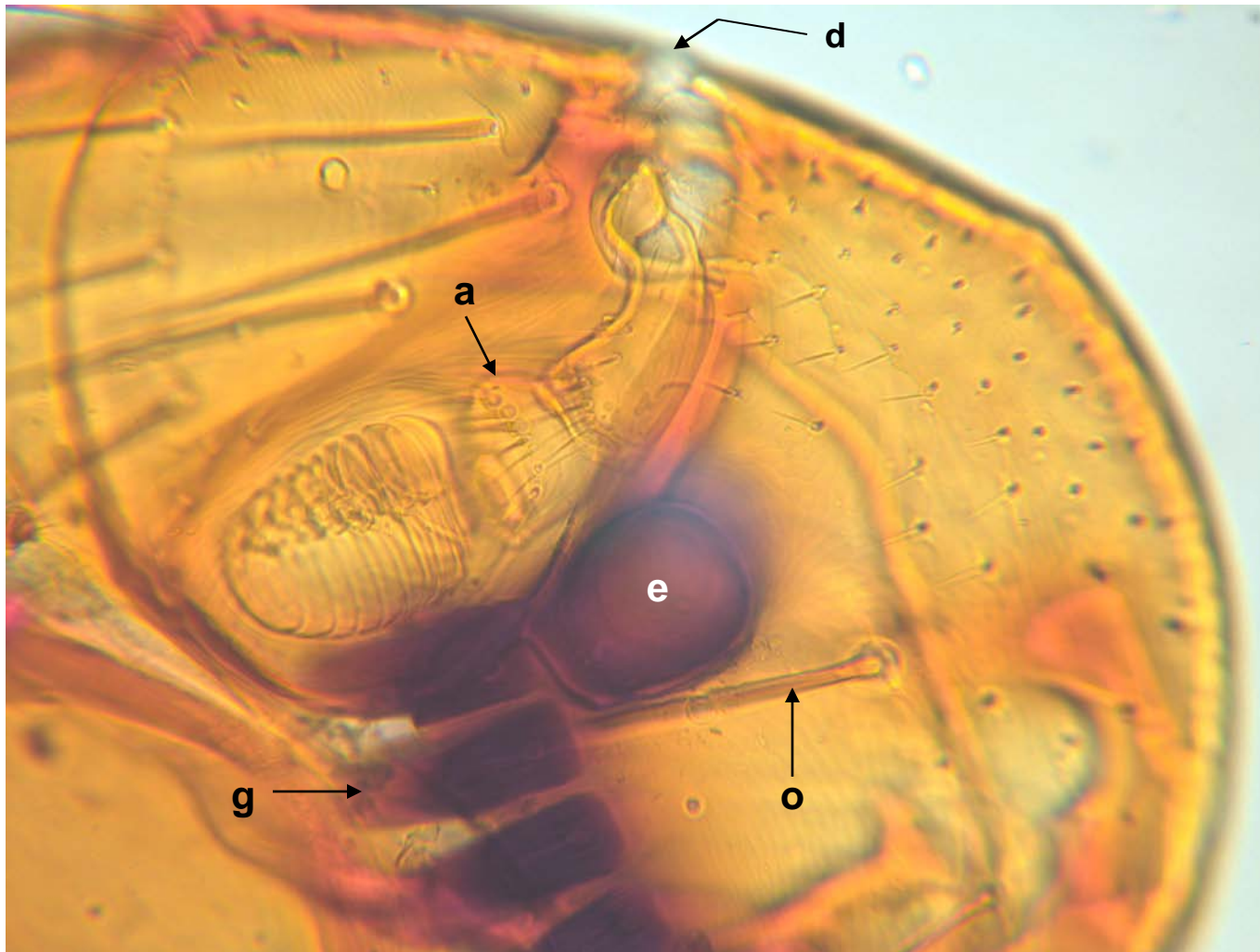


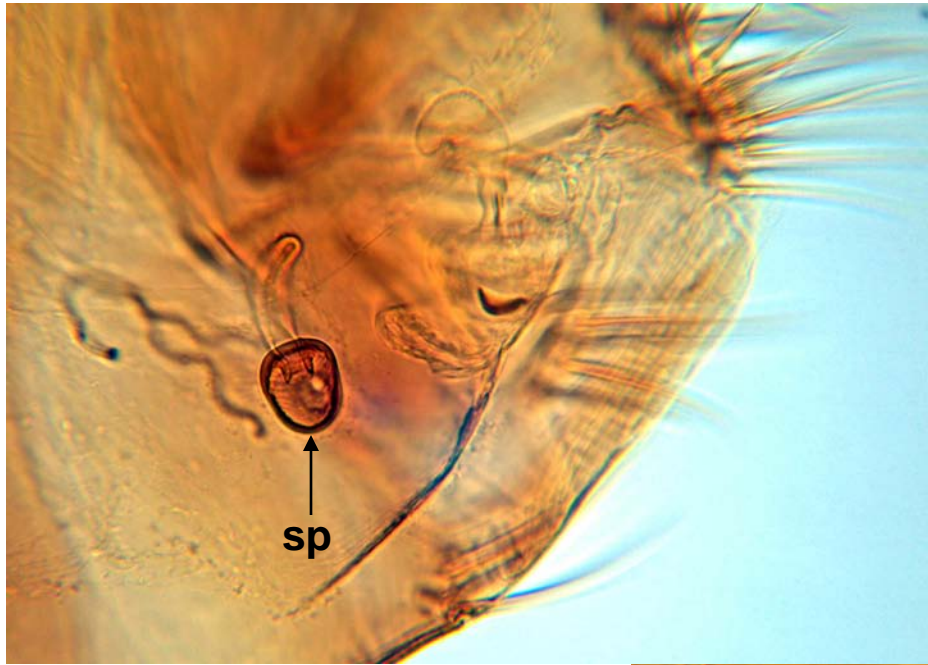
*Cediopsylla simplex* (male); head in two depth of field views. Legend: a, antenna (in groove); b, antenna base; e, eye; g, genal comb tooth; m, maxillary palp (0.37 mm long); p, pronotal ctenidium (= comb).





*Cediopsylla simplex*, head of male. Legend: a, antenna in groove; d, dorsal sulcus; e, eye; g, genal tooth; o, ocular bristle.





*Cediopsylla simplex*, female.  
Legend: p, proventriculus;  
s, spiracle; sp, spermatheca;  
t, trachea (in anterior  
abdominal segments).

